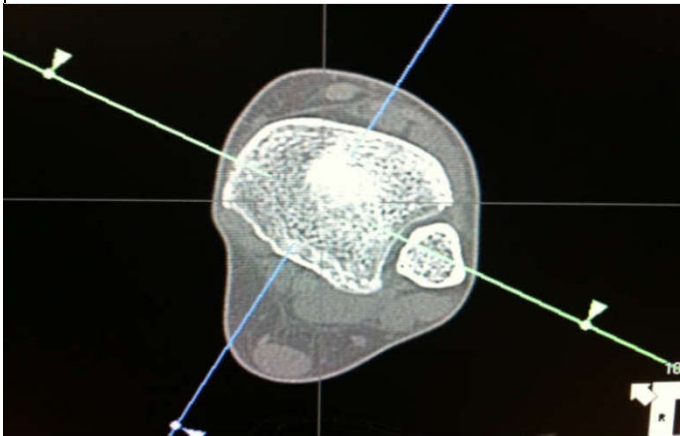


# Ankle SUMMARY

Indications	Pain, swelling, trauma					
Diagnostic Task	Detects fractures, hematomas, arthritis, bone cyst					
Scan mode	Helical					
	include joint of interest only					
Helical Set	recon	body part	thickness spacing	kernel	window	recon destination
	1	ankle bone	.625mmx .625mm	bone		pac
	2	soft tissue	.625mmx.625mm	standard		mpr 3d
	3	soft tissue ankle	2mmx 2mm	standard		pac
	4	sag bone	2mmx2mm	bone		pac
	5	coronal bone	2mmx2mm	bone		pac
	6	sag soft tissue	2mmx2mm	standard		pac
	7	coronal soft tissue	2mmx2mm	standard		pac
Scan Start/end location	2cm superior to tibial metadiaphysis					
	2cm inferior calcaneus tuberosity					
	include all of fx and hardware					
DFOV	25 cm					
	decrease appropriately					
3D Technique Used	do 3d spin with recon 2- 20 images rotate externally-if fracture seen					
IV contrast volume/type	100ml -isovue 370- if needed for soft tissue infection or mass					
Scan delay	90seconds-Performed as directed by a the supervising radiologist					
	Use axial image for sag and coronal reformats Use foot board to position feet					



Please see online MSK CT protocols for details.