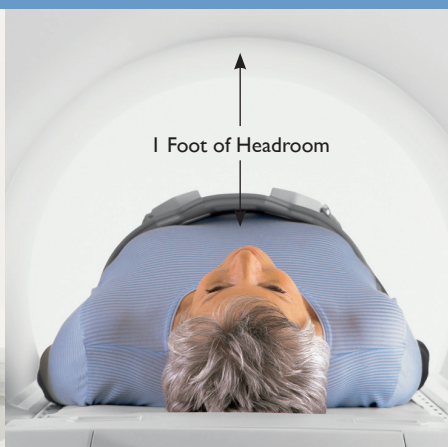
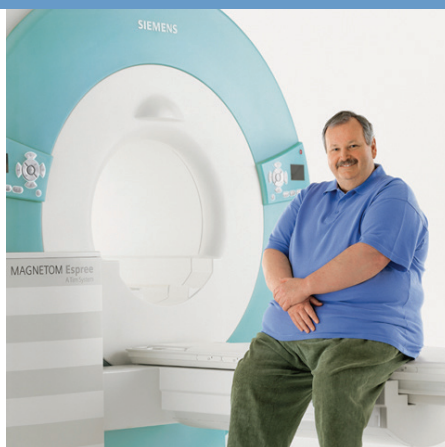




Big, Powerful and Comfortable



MAGNETOM Espree™ 1.5 Tesla MRI

Diagnostic Imaging Northwest

has been serving this community for over 50 years delivering a team of board certified, subspecialty fellowship trained radiologists. Our ACR accredited sites assure excellence in care and high performance technology at every level.



Diagnostic Imaging Northwest offers patients the high-power, superior quality of the Siemens Espree—an ultra-short bore, 1.5T MRI which gives more headroom, more legroom and more comfort with a less claustrophobic feeling. Quality imaging you expect. The Siemens MRI accommodate patients up to 550 lbs.

More headroom, more legroom...a comfortable experience.

Bonney Lake | Puyallup | Sunrise

Scheduling: (253) 841-4353 | Fax: (253) 446-3973

dinw.com

An MRI scan is a painless radiology technique that has the advantage of avoiding x-ray radiation exposure. There are no known side effects of an MRI scan. The benefits of an MRI scan relate to its precise accuracy in detecting structural abnormalities of the body.

More Helpful Information

What is MRI?

Magnetic Resonance Imaging (MRI) examinations have become one of the most frequently ordered diagnostic technologies. This is because MRI uses radio waves and a strong magnetic field to provide precise detail of the internal organs, body tissues and associated conditions or diseases.

MRI is performed to evaluate organs of the chest and abdomen (heart, liver, kidneys, spleen, bowel, pancreas and adrenal glands).

Other diagnostic uses of the MRI may include showing abnormalities of the brain, hemorrhage, tumor, infection, multiple sclerosis, and demyelinating disease. Head and neck MRI's may reveal carotid artery disease, nasopharyngeal tumors, and sinus disease. MRI of the spine may isolate disorders such as bulging or herniated disk, spinal stenosis, and metastatic disease.

Equipment & Image

MRI equipment is categorized according to magnetic field strength. The 1.5 Tesla units produce great image quality and provide superior brain and spine imaging as well as orthopedic imaging of the joints.

MRI images themselves look like axial slices through the anatomic structure. The MRI computer can reconstruct or "re-slice" the images at any angle. These allow the physician team to better view and/or isolate any areas of particular interest.

What Should I Expect?

At the beginning of the examination, you may be asked to remove your eyeglasses, hearing aids, and non-permanent dental appliances. **No metal items may be worn during procedure including:** pacemakers, watches, wallets, keys, piercing(s), bras, etc. At time of exam you will be provided a medical gown to wear.

You will be positioned comfortably on a sliding table near the center of the MRI unit. The technologist will then leave the room. He/she can still see, hear and communicate with you throughout the procedure. You will be asked not to move during the actual imaging process. During the procedure, most MRI scanners make a loud tapping or knocking noise as the magnetic coils change pulse directions. You will be given ear plugs to wear or headphones for music.

MRI procedures are not painful. You may feel a warm sensation in the area being scanned. This is normal. If you feel uncomfortable, let your technologist know. Some patients may benefit from mild sedation prior to the scan. If this applies to you, your physician will need to prescribe medication for you. Most often sedatives are not required.

When the exam is completed, you will be asked to wait until it is determined whether any additional images are required. If not, you will be allowed to change and return to your normal routine. Results are usually available three business days after the procedure. Please contact your referring physician for results at that time.

Scheduling: (253) 841-4353 | Fax: (253) 446-3973

dinw.com



Diagnostic Imaging Northwest is accredited by the American College of Radiology (ACR) in MRI.